

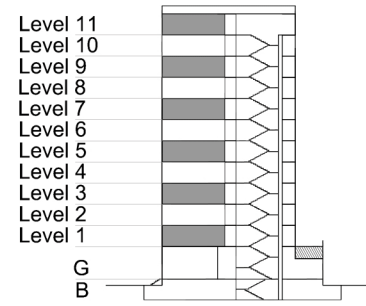
TYPE 2 - GATEWAY BUILDING

THREE BEDROOM APARTMENT

Variation 2

Net Area = 132.7 sq.m (1428.6 sq.ft)
 Balcony Area = 10.1 sq.m (108.9 sq.ft)
 Total Area = 142.8 sq.m (1537.5 sq.ft)

OCCURS IN GATEWAY FLOOR PLAN V1 AND V2



KEY SECTION - C2

